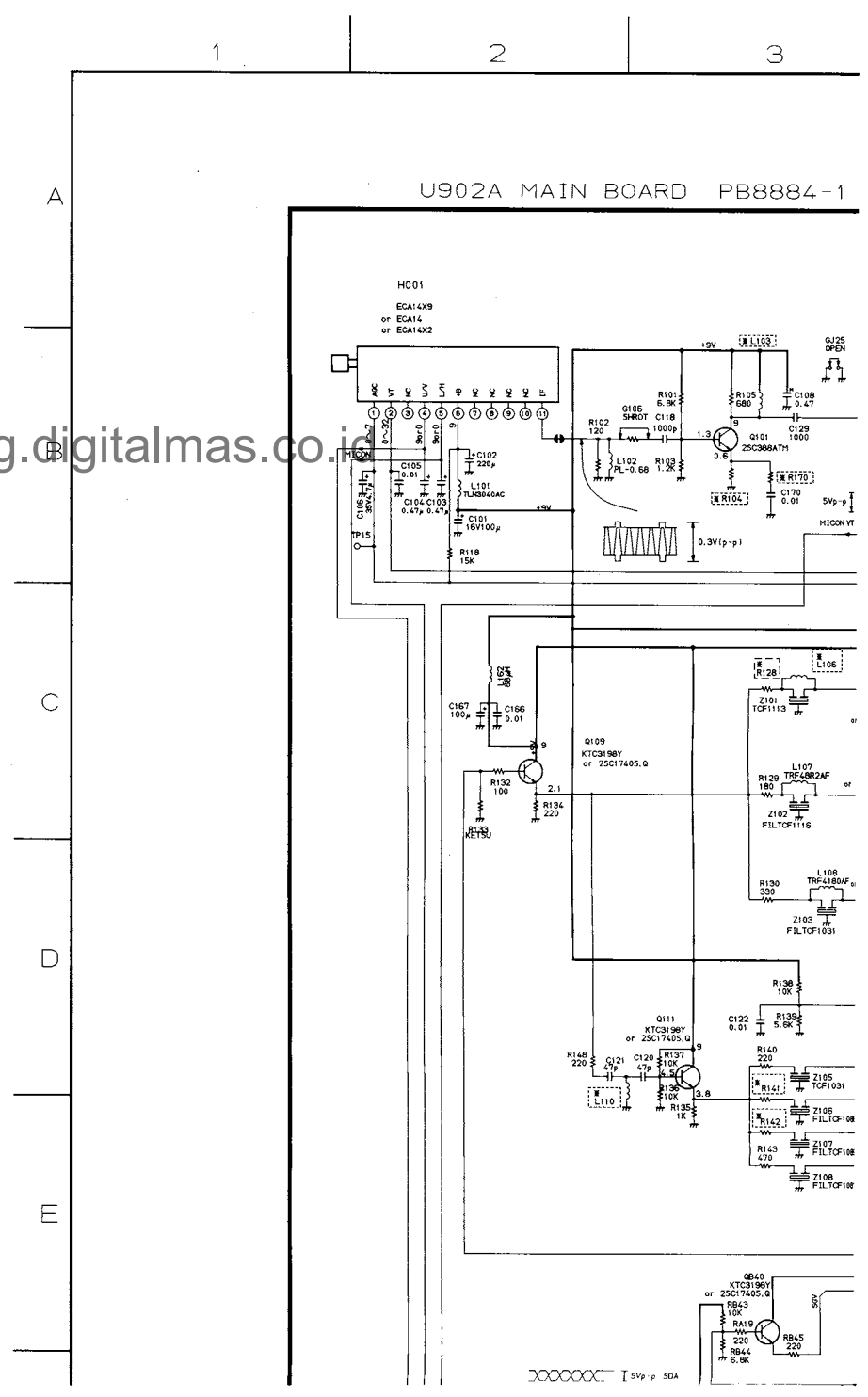


SCHEMATIC DIAGRAM

MODEL : 14N5XM / 14N5XMJ

14N5XE / 14N5XMS

CAUTION: The international hazard symbols "⚠" in the schematic diagram and the parts list designate components which have special characteristics important for safety and should be replaced only with types identical to those in the original circuit or specified in the parts list. The mounting position of replacements is to be identical with originals. Before replacing any of these components, read carefully the PRODUCT SAFETY NOTICE on page 3. Do not degrade the safety of the receiver through improper servicing.



OBSERVATION OF VOLTAGES AND WAVEFORMS

1. Voltages read with VTVM from point shown to chassis ground, line voltage 220 volts, colour bar signal. Voltages reading may vary $\pm 20\%$.
2. All waveforms are taken using a wide band oscilloscope and a low capacity probe.
3. Waveforms are taken using a standard colour bar signal.
4. Make sure that CONTRAST and COLOUR controls are in mid position and BRIGHTNESS control is almost in maximum position. Set other controls for best picture.

NOTES:

1. D.C. resistance value. These are measured.
2. The circuits are sub-circuits.
3. \bullet : Solder links.

Technical
on page

3

4

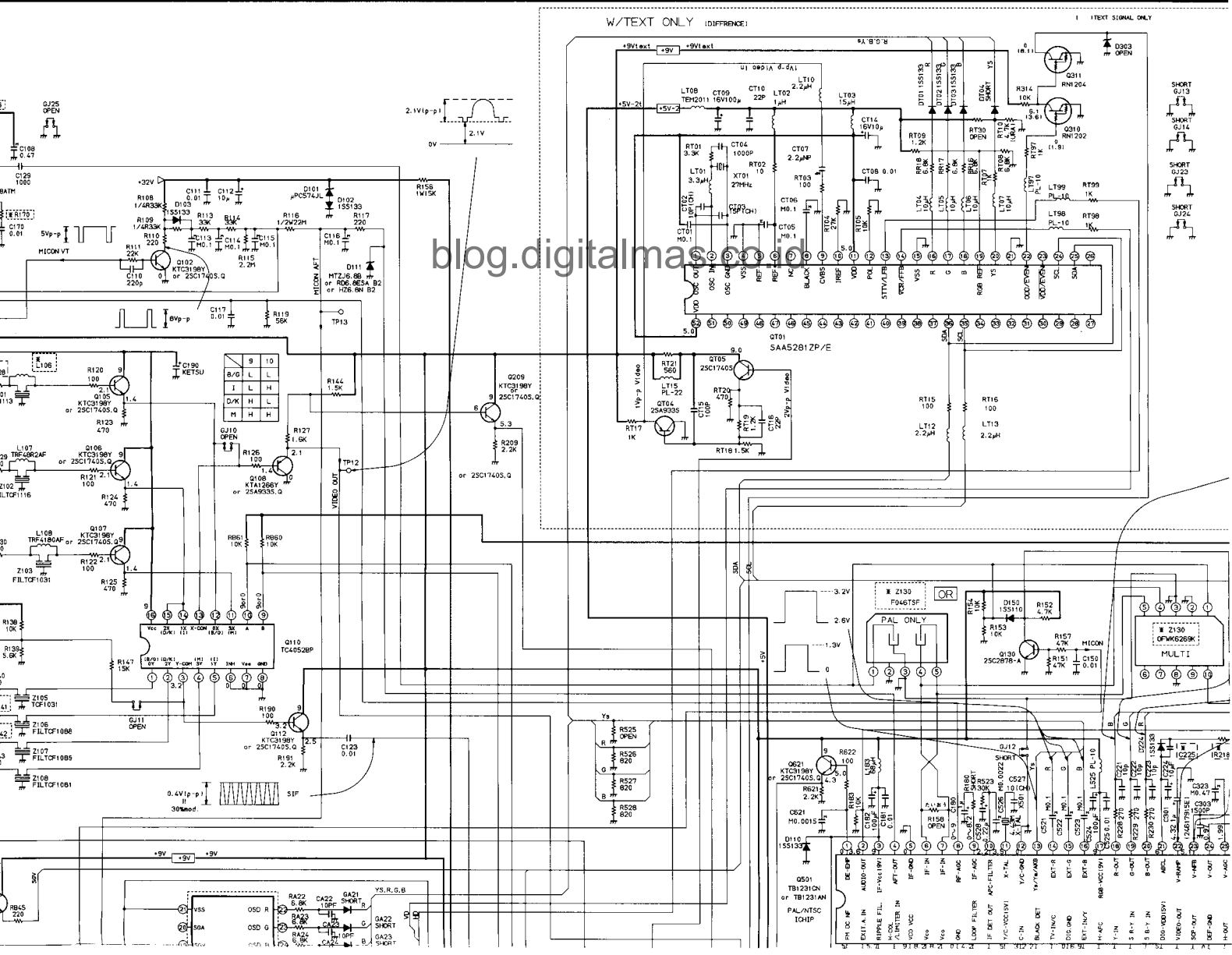
5

6

7

8

884-1 (BASE=PB7330)



EXPRESSION

VALUE OF RESISTOR, CAPACITOR and INDUCTOR

1. Resistance is shown in ohm, k=1,000, M=1,000,000
2. Unless other wise noted in schematic, all capacitor values are in μF and the values more than 1 in pF.
3. Unless otherwise noted in schematic, all inductor values are in μH , and the values less than 1 in H.

...nce value of a principal transformer is shown in this schematic dia-
 ...e are measured for separated from the circuit.
 ...are subject to change without notice.
 ...er links.

9

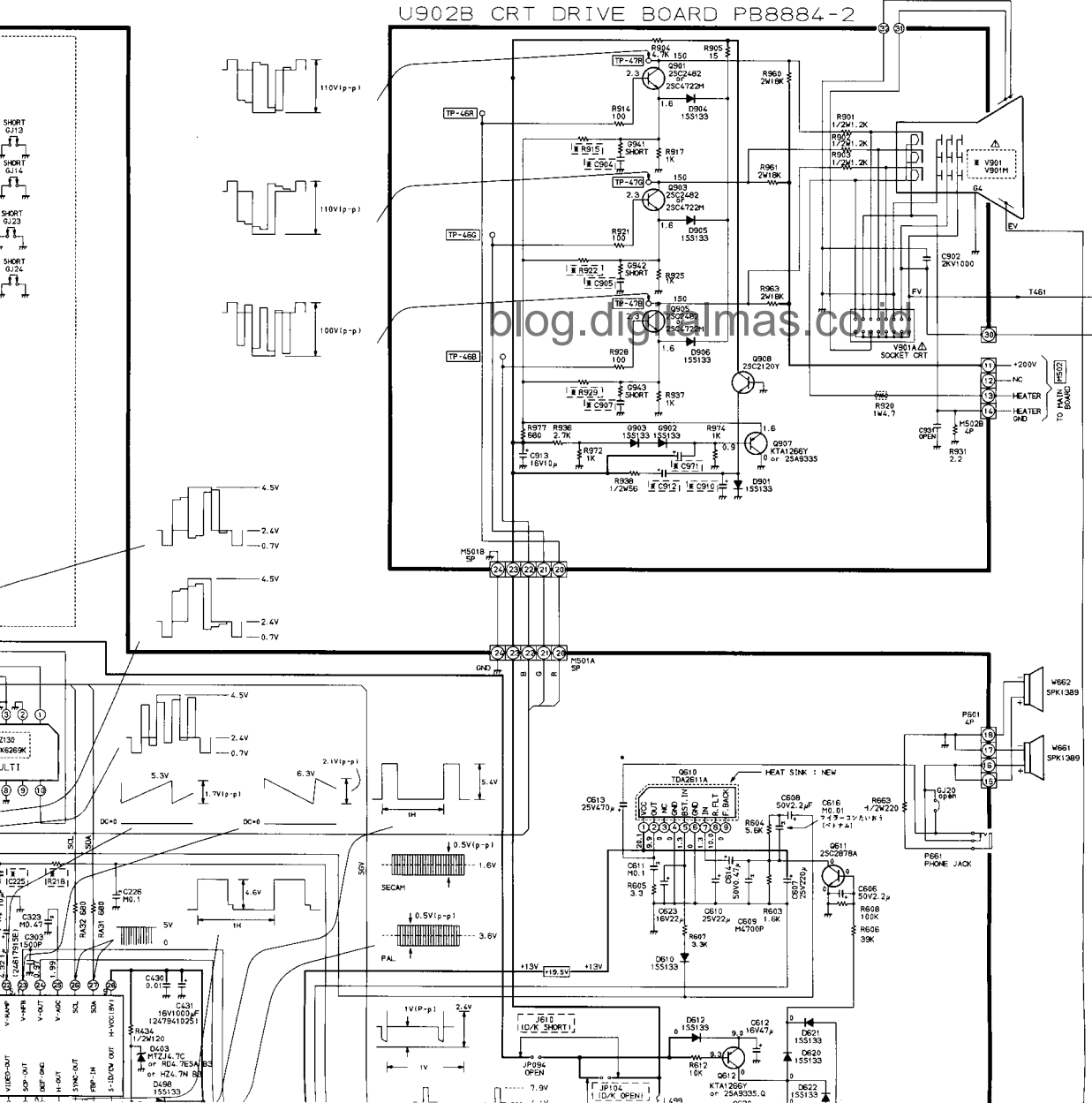
10

11

12

13

U902B CRT DRIVE BOARD PB8884-2



MODEL (JOB)	MAIN UNIT	14N5
LOC. NO.		
L103	TRF-2	
R104	1/5W	
R170	1/5W	
L106	TRF-2	
L110	TRF-2	
R128	1/5W	
R141	SHOR	
R142	SHOR	
GA01 (RA)	TMPB	
GA01 (RB)	TMPB	
RA14	1/5W	
RA15	1/5W	
RA64	OPEN	
RA65	OPEN	
GJ10		
GJ11		
L107		
L108		
Q106		
Q107		
Q110		
R121		
R122		
R124		
R125		
R129		
R130		
R134		
R143		
RA75		
Z102		
Z103		
Z106		
Z107		
Z108		
QB60		
QB61		
RB60		
RB61		
R526		
R527		
R528		
C904	50V	
C905	50V	
C907	50V	
C971	15V	
R915	1/5W	
R922	1/5W	
R929	1/5W	
C910	50V	
C912	15V	
L901 (RA)	T5B	
L901 (RB)	T5B	
L901 (RC)	T5B	
V901 (RA)	A3A	
V901 (RB)	NON	
V901M (RA)	MAG	
V901M (RB)	NON	
D433	SS	
D830	MTZ	
T801 (RA)	TRF	
T801 (RB)	TRF	
T802 (RA)	TRF	
T802 (RB)	TRF	
GJ03-GJ06	OPEN	
R470	500	
R470	1W	
C801		
C886		
C889		
D886		

F

G

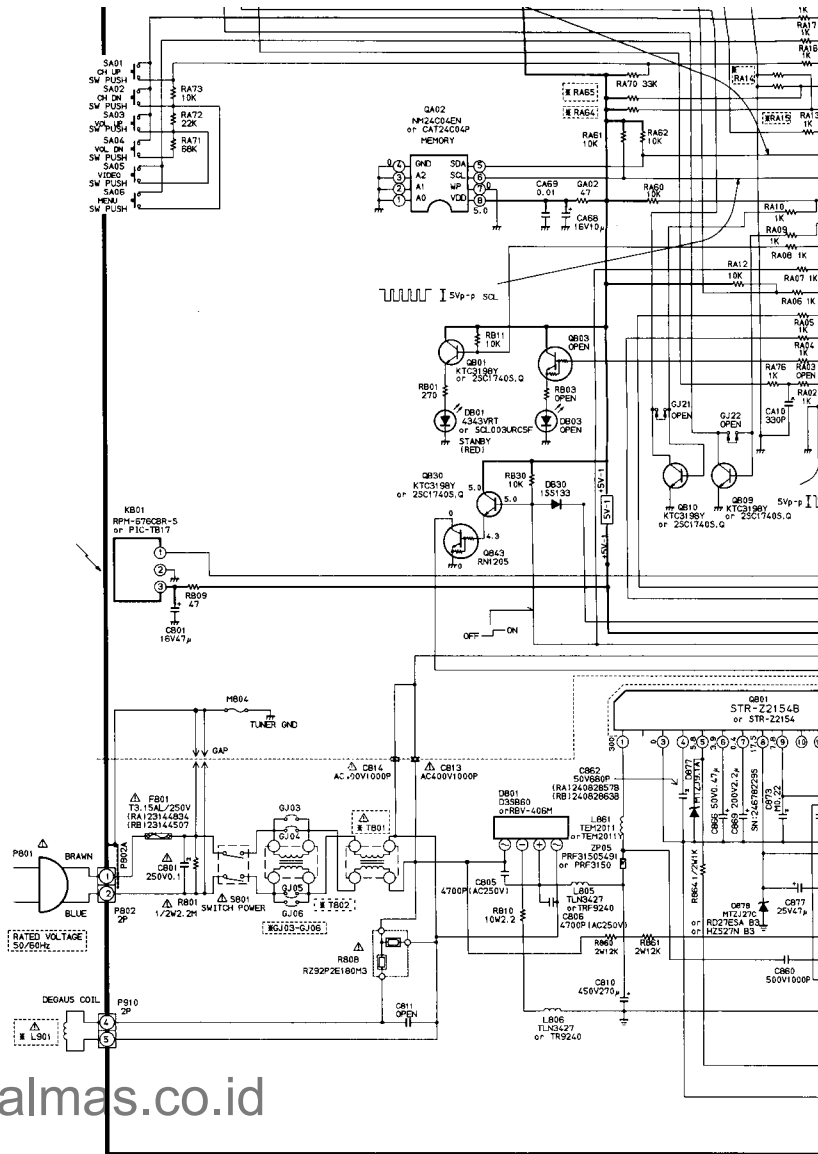
H

I

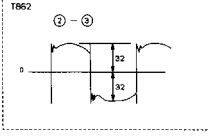
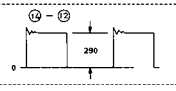
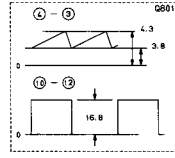
J

K

L



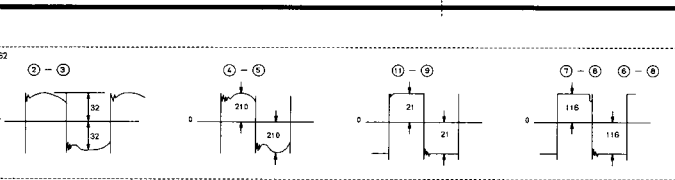
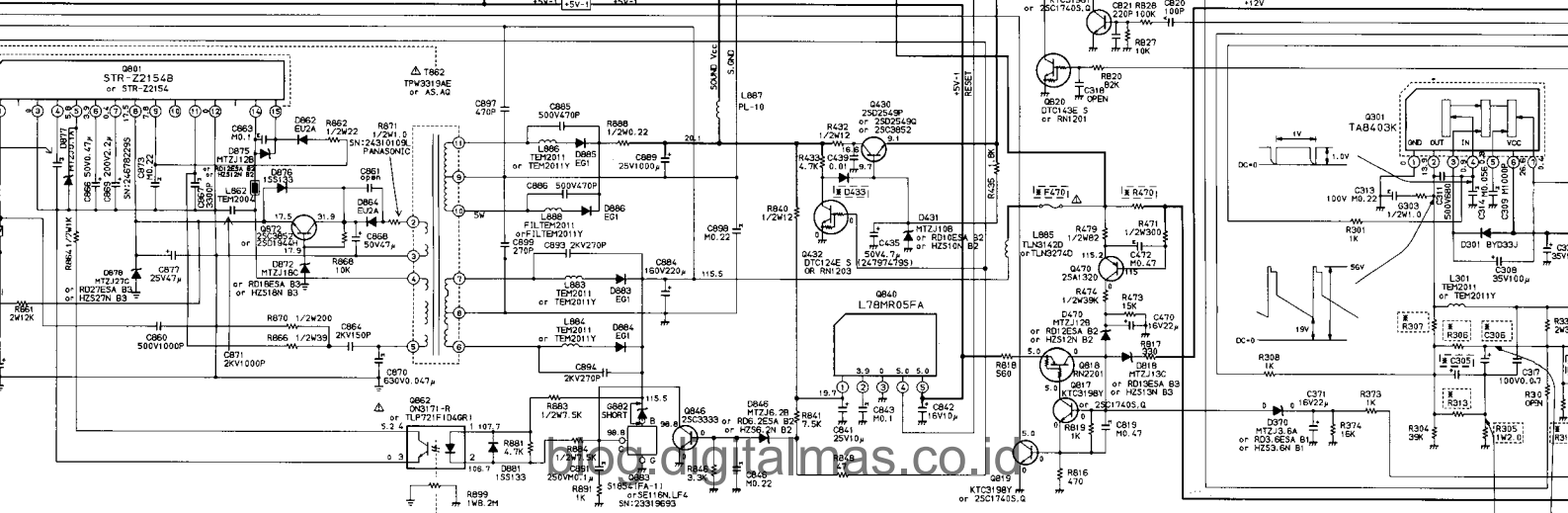
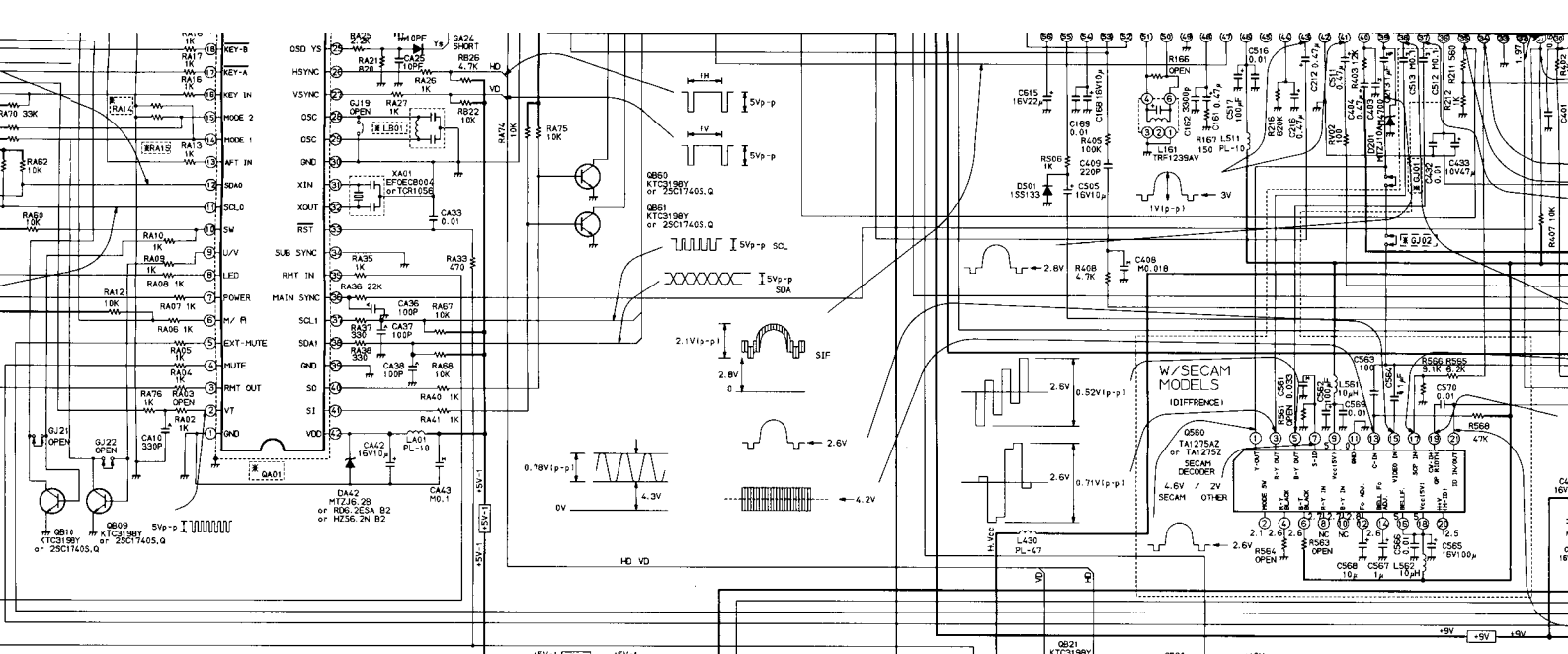
blog.digitalmas.co.id



1

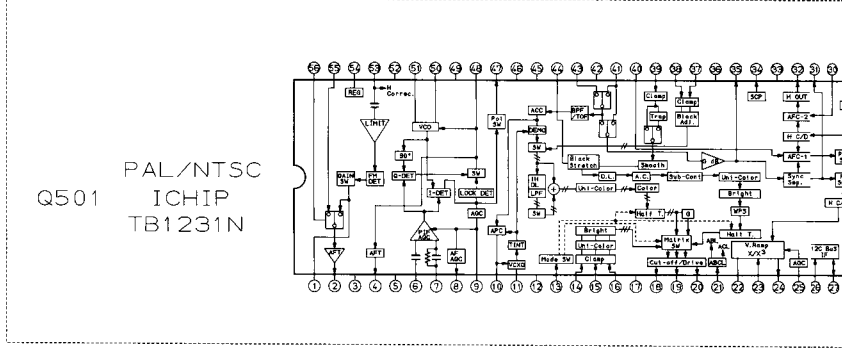
2

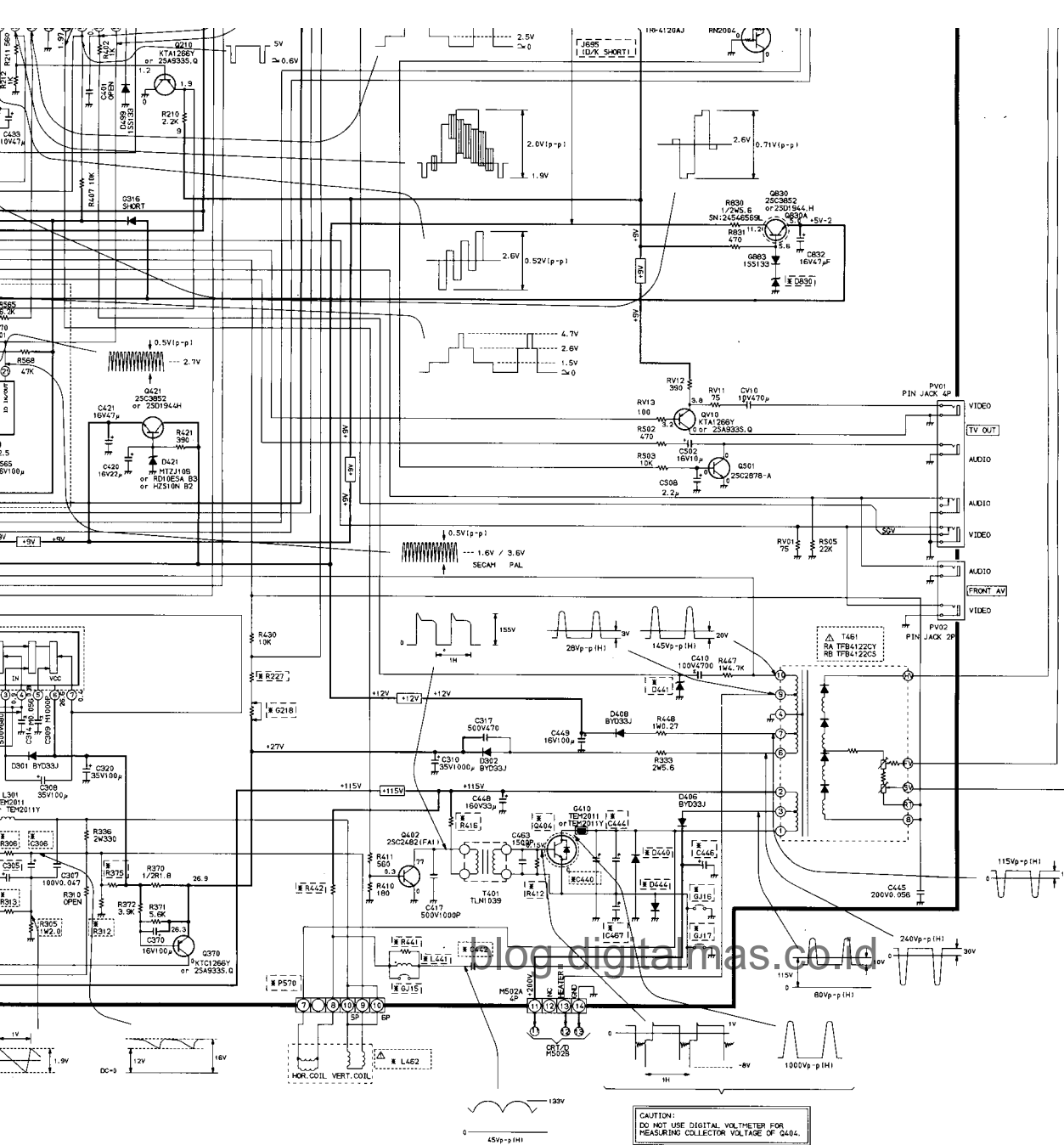
3



PAIR USE

Q863	Q862
S1854(FA-4)	HTZJ 2.7B
S1854(FA-1)	SHORT
SE116N.LF4	SHORT





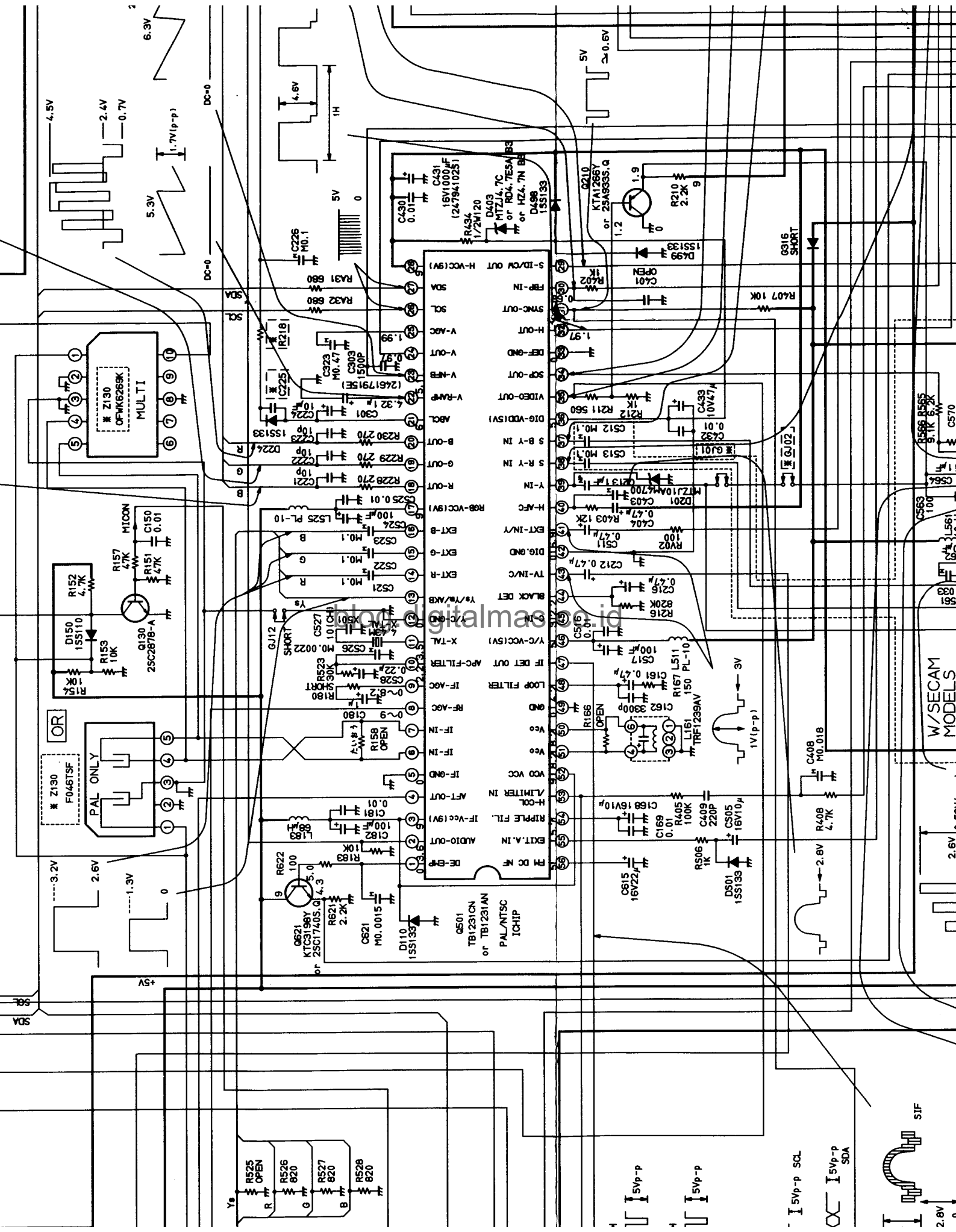
LB88	
Q852 (RA)	
Q852 (RB)	
C318	
R227	1/6
R218	1/6
C225	OP
G218	SH
R305	1W2
R306	1/6
R307	1/6
R312	1/2
R313	1/6
R375	OP
Q404 (R1)	2SD
Q404 (R2)	2SD
R416 (R1)	5W
R416 (R2)	5W
R421	OP
C306	5M
C306	5M
C150	16V
D150	
R151	
R152	
R153	
R154	
R157	
Z130	
Q130	
C440	1.2
C442	25
C444	OP
C446	25
C467	OP
D444	OP
D440	OP
D441	MT
GJ15	SH
L441	OP
R441	OP
R442	2W
P570	5
L462 (RA)	TL
L462 (RB)	TL
T461 (RA)	TH
T461 (RB)	TH
GJ16	SH
GJ17	SH
LB01	TR
RA12	
RA74	
RA06	
GA21	
GA22	
GA23	
GA24	
RA21	
RA25	
TEXT BLK	OP
SECAM BLK	US
GJ01	OP
GJ02	OP
J610	
J695	
JP104	
W661	
W662	
C616	
RATED VOLTAGE	110

DIFFERENCE BETWEEN 14" 20" 21"

DEFLECTION	CRT	POWER	
C225	Q404	C904	F470
C305	R218	C905	GJ03
C306	R227	C907	GJ04
C440	R305	C910	GJ05
C442	R306	C912	GJ06
C444	R307	C971	R470
C446	R312	L901	T801
C467	R313	R915	T802
D440	R375	R922	D830
D444	R412	R929	D433
G218	R416	V901	
GJ15	R441	V901M	
GJ16	R442		
GJ17	T461		
L441			
L462			

1470 SERIES (S8ER)

14N5XE	21N3XM
14N5XM	21N3XMS
14N5XMJ	
14N5XMS	
20N3XM/J	
20N3XMS	



W/SECAM MODELS



5Vp-p SCL

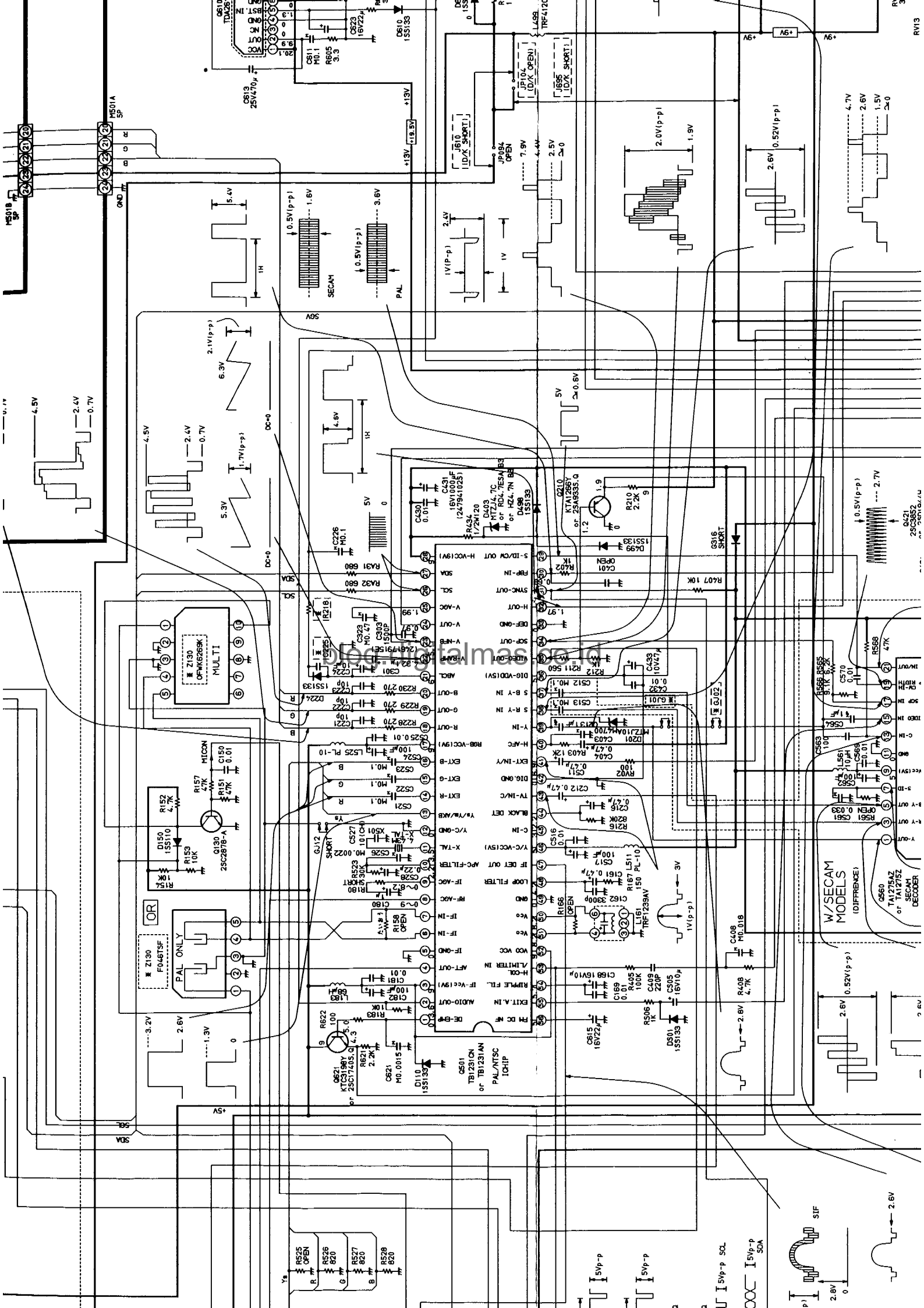
5Vp-p SDA

5Vp-p

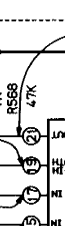
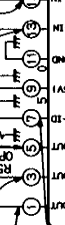
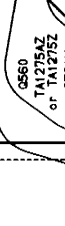
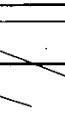
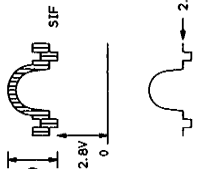
5Vp-p

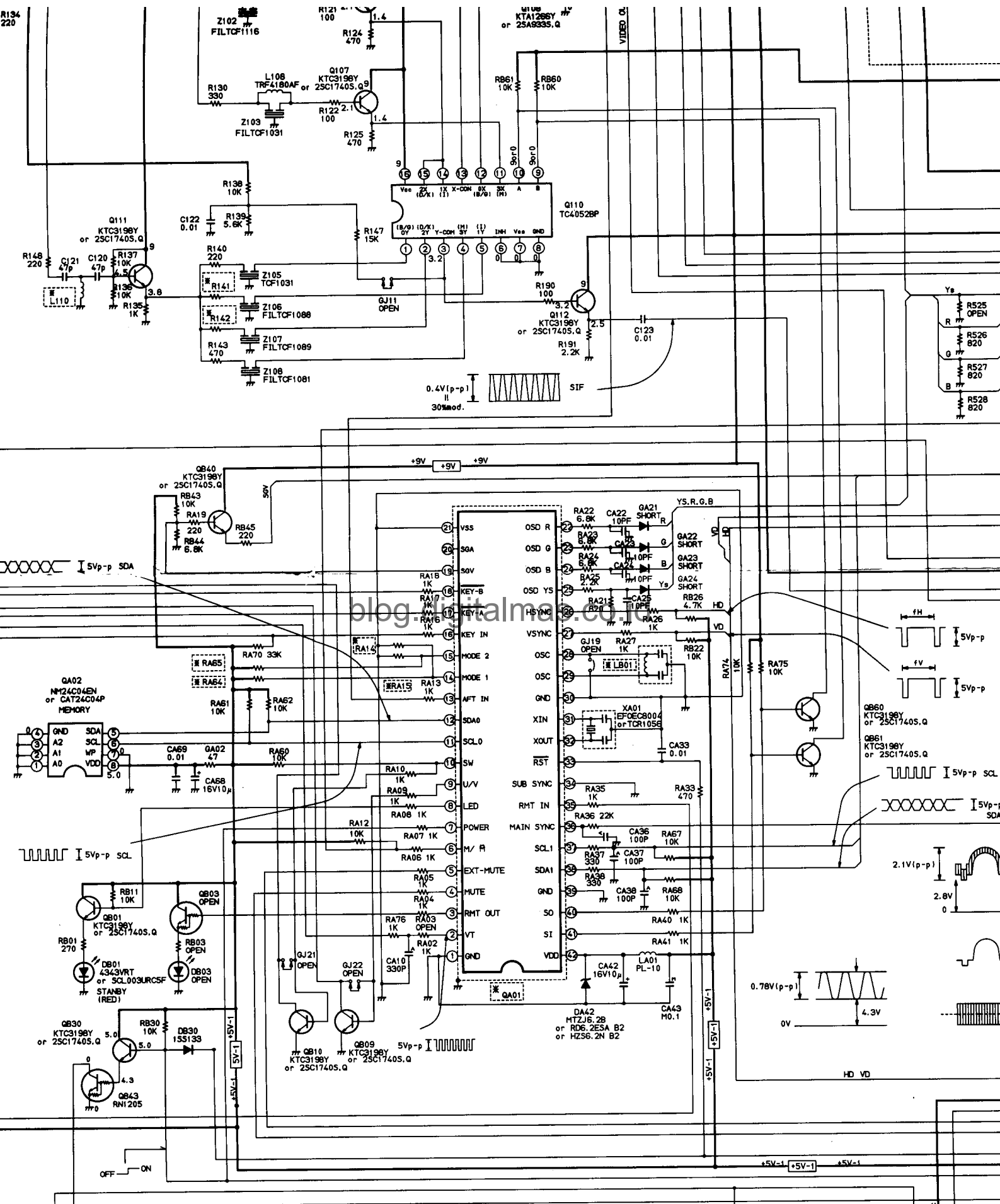
2.8V

SIF



W/SECAM MODELS
(DIFFERENCE)

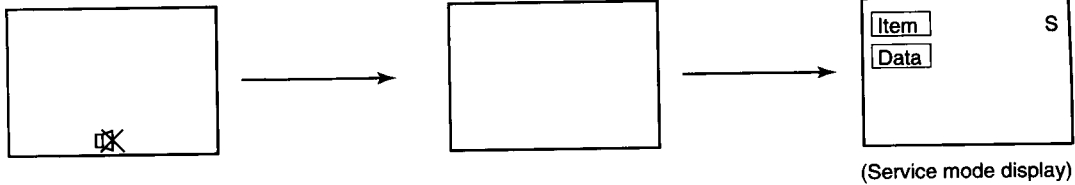




SERVICE MODE

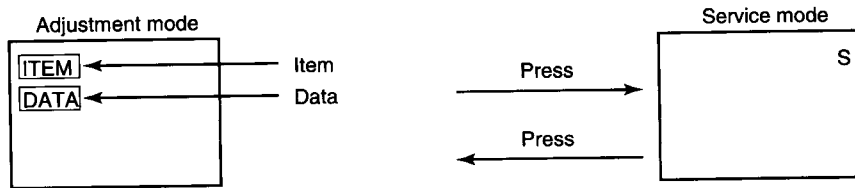
1. ENTERING TO SERVICE MODE

- 1) Press OK button once on Remote Control.
- 2) Press OK button again to keep pressing.
- 3) While pressing the OK button, press MENU button on TV set.



2. DISPLAYING THE ADJUSTMENT MENU

- 1) Press MENU button on TV.



3. KEY FUNCTION IN THE SERVICE MODE

The following key entry during display of adjustment menu provides special functions.

A single horizontal line ON/OFF :	- / - - button (on Remote) or \ominus button (on TV)
Test signal selection :	\ominus button (on Remote)
Selection of the adjustment items :	CHANNEL $\blacktriangle/\blacktriangledown$ (on TV & Remote)
Change of the data value :	VOLUME $\blacktriangle/\blacktriangledown$ +/- (on TV & Remote)
Adjustment menu mode ON/OFF :	MENU button on TV
Initialization of the memory (QA02) :	CALL + CHANNEL button on TV (\blacktriangle)
Reset the count of operating protect circuit to "00" :	CALL + CHANNEL button on TV (\blacktriangledown)
"RCUT" selection :	1 button
"GCUT" selection :	2 button
"BCUT" selection :	3 button
"CNTX" (or "SCNT") selection :	4 button
"COLC" selection :	5 button - - - Color thickness correction
"TNTC" selection :	6 button
Test audio signal ON/OFF (1kHz) :	8 button
Self diagnostic display ON/OFF :	9 button
	note: Displayed differently as shown below, depending on the setting of the receiving color system.
	COLP (PAL)
	COLC (NTSC)
	COLS (SECAM)

CAUTION : Never try to perform initialization unless you have changed the memory IC.